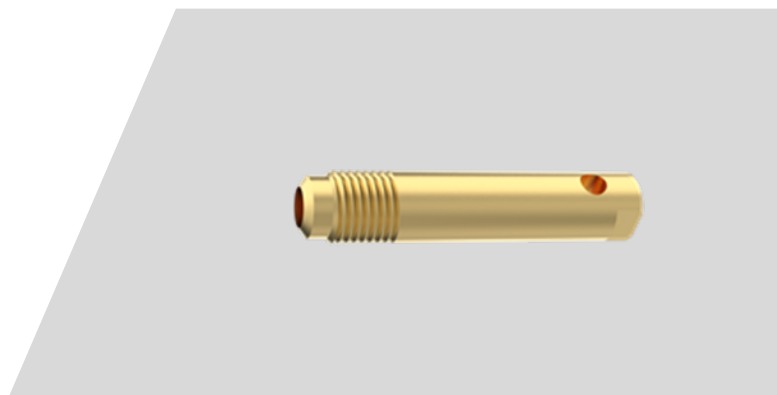
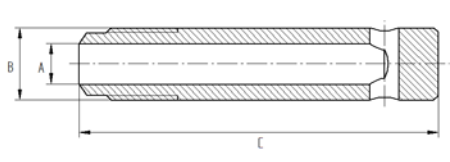


Protection tube

K17-1.15.58-S1



product characteristic

screw-in accessory, which protects against potential contamination from the cylinder (particles, water etc.) from entering the airways

technical data

product area	AIRcontrol
connection thread	M8x0.75
tightening torque	8-10 Nm
width across flat	AF6
weight	approx. 11 g
maintenance/service life	inspect at regular intervals (e.g. as part of the cylinder recertification) and replace depending on the inspection results

dimensions

A	ø 4.5 mm
B	ø 8 mm
C	approx. 40 mm

material

metals	brass
--------	-------