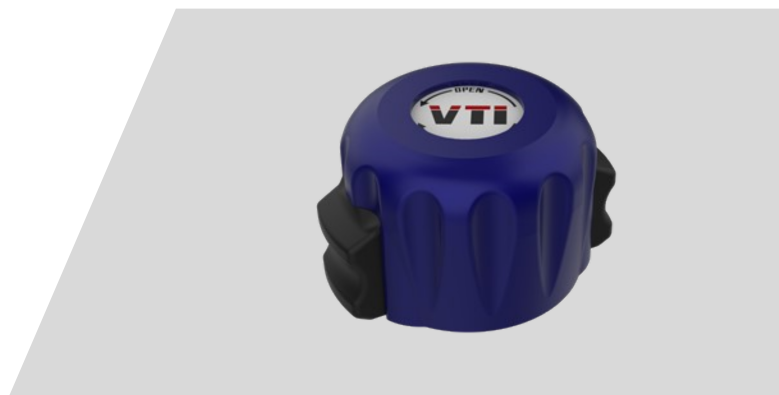
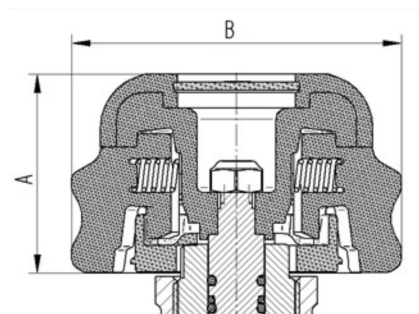


Ratchet handwheel type "Push-Button"

K17-2.11.201-Sx



situation

In a rescue mission it might happen that a fireman has to go through narrow spaces e.g. in a building and eventually he has to walk close along a wall. By that means the handwheel could close off the respiratory flow unintentionally.

general information

product area	AIRcontrol
product characteristic	protection against unintentional closing
protection through	ratchet mechanism (only allows movement in ONE direction while preventing motion in the other direction)
mode of operation	<ul style="list-style-type: none"> • to open, turn handwheel counter-clockwise • to close, keep BOTH buttons pressed and turn handwheel clockwise (only pushing ONE button will NOT suspend the ratchet mechanism)
suitable for	all AIRcontrol valve series
weight	approx. 85 g
options	various colour options (standard colours: black RAL 9004, blue RAL 5017, grey RAL 7023)

dimensions

A	approx. 38 mm
B	ø approx. 63 mm

material

metals	<ul style="list-style-type: none"> • pressure spring: steel • hexagonal nut: steel
polymers	<ul style="list-style-type: none"> • jacket: TPU flame resistant acc. to UL94 V0 • core: PA66, flame resistant • button: PA66, flame resistant • ratchet ring: PA6 flame resistant acc. to UL94 V0