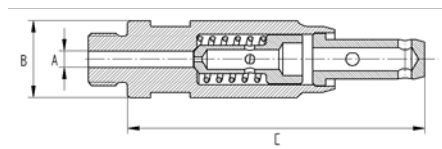


Excess Flow Valve with protection tube

K19-284.0-S1



product characteristics

- safety device, which reduces the flow in case of a sudden release of the cylinder content (e.g. by unintentional opening or a broken-off valve) and thus prevents the cylinder from accelerating due to recoil, flying around uncontrollably and causing damages to property and/or injury to persons in the worst case
- the protection tube additionally protects against potential contamination from the cylinder (particles, water etc.) from entering the airways

technical data

| | |
|--------------------------|--|
| product area | AIRcontrol |
| connection thread | M8x0.75 |
| tightening torque | 10 Nm |
| width across flat | AF10 |
| weight | approx. 25 g |
| maintenance/service life | inspect at regular intervals (e.g. as part of the cylinder recertification) and replace depending on the inspection results |
| other | <ul style="list-style-type: none"> • not suitable for diving purposes • fulfills both requirements of the vfdb directive 0810 appendix 02/ DGUV205-014 • BAM-tested (test report DG-03-075) |

dimensions

| | |
|---|---------------|
| A | ø 2.5 mm |
| B | ø 11.7 mm |
| C | approx. 45 mm |

material

| | |
|--------|----------------------|
| metals | brass, nickel plated |
|--------|----------------------|